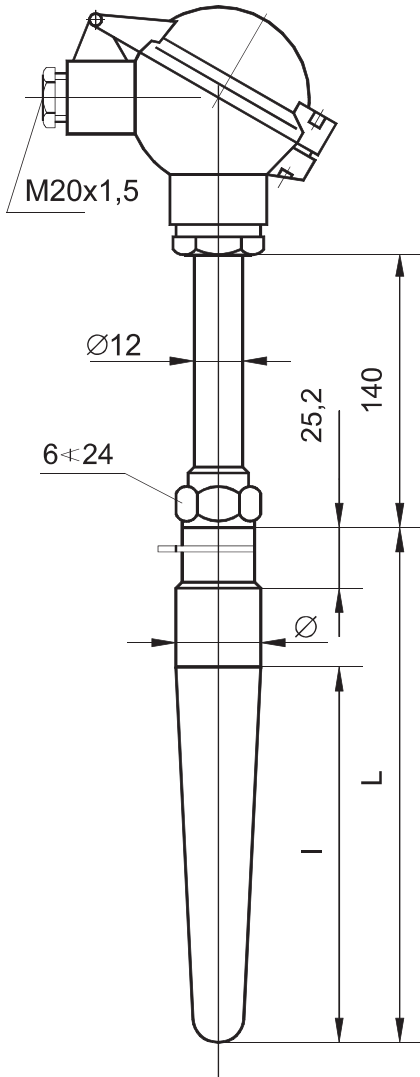


**TEMPERATURE SENSOR TYPE CT SW1, CT SW2**



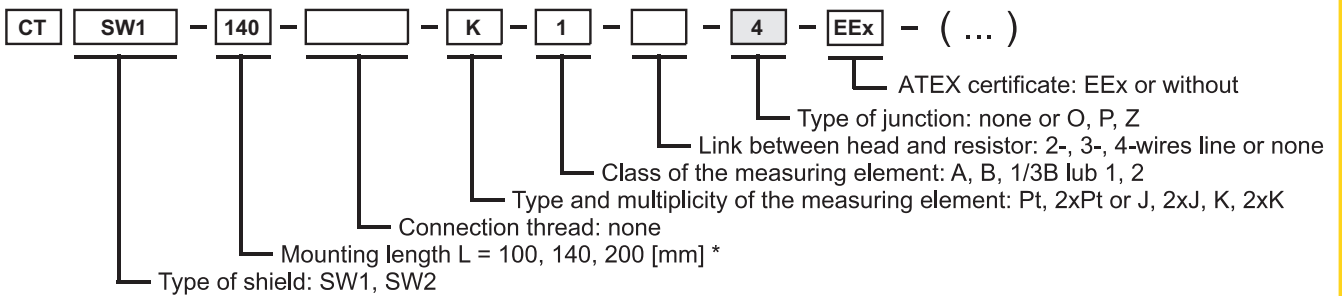
**TECHNICAL DATA:**

1. Measuring range:  
Pt: 0 ... 550 [°C]  
J/K: 0 ... 550 [°C]
2. Admissible load:  
see **Graph 3**
3. Material of wetted parts:  
15HM, inconel, hastelloy
4. Standard immersion length L:  
100, 140, 200 [mm] (\*)
5. Fastening (welding) diameter:

CT SW1	CT SW2
Ø=18h7	Ø=24h7

Type of sensor	Shield			Measuring insert Ø [mm]
	Ø [mm]	L [mm]	l [mm]	
CT SW1	18h7	100	35	3
		140	65	3
		200	65	3
CT SW2	24h7	140	65	6
		200	65	6

**EXAMPLE OF ORDER:**



**ADDITIONAL INFORMATION:**

- 1.\* Non-standard length of temperature sensors on demand.
2. Type of exchangeable insert: W2.
3. Please indicate the type of material to be used for the shield of sensor between brackets. Standard execution of material 10 H2M.
4. To specify temperature sensor with the head - mounted transmitter please add code of transmitter at the end of ordering code of sensor (see chapter X) e.g.

